

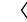
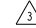
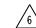
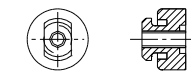


PART NO.	MODEL NUMBER	A±3.0	B	C±3.0	D±3.0	E	F	H	MOUNTING KIT
497-0798-00	ZH09KVE-PFZ-526	386.4 [15.213]	360.2 [14.181]	263.7 [10.382]	222.1 [8.744]	OMIT [OMIT]	302.0 [11.89]	19.1 [0.75]	
497-0798-01	ZH09KVE-PFZ-426	391.3 [15.404]	365.7 [14.398]	263.7 [10.382]	222.1 [8.744]	74.6 [2.938]	302.0 [11.89]	OMIT	OMIT

SPECIFICATIONS	
ES NO.	DESCRIPTION
ES22-122	PACKAGING
ES81-159	CLEANLINESS
ES81-250	IDENTIFICATION
ES92-155	CONVERSION-METRIC
ES92-167	REGULATORY COMPLIANCE

- NOTES:
-  ALL TOLERANCES ± 1.5 [0.06] UNLESS OTHERWISE SPECIFIED.
 - DUE TO ACCUMULATED ASSEMBLY TOLERANCES THE LISTED COMPONENTS MAY VARY FROM THE MOUNTING HOLES AS SHOWN BELOW:
 -  SUCTION FITTING : ± 3.0 [0.12]
DISCHARGE FITTING: ± 3.0 [0.12]
 - 2. TUBE ENDS MUST BE PLUGGED.
 -  INJECTION FITTING & THERMOSTAT TUBE OMITTED.
 - 4. FOR MORE INFORMATION SEE PRODUCT CATALOG.
 - 5. FULL HEIGHT OF COMPRESSOR DOES NOT INCLUDE MOUNTING SPACERS.
 -  MOUNTING KIT:

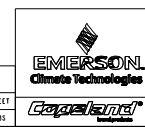
GROMMET DUROMETER	4 FOOT KIT
35-45	527-0116-00



USE COPPER CONDUCTORS ONLY. USE MINIMUM 75°C WIRE FOR AMPACITY DETERMINATION. INTERNAL MOTOR PROTECTION-ALLOW TIME FOR RESET. OVERCURRENT PROTECTION DEVICE RATING AND TYPE MUST BE IN ACCORDANCE WITH REGULATORY AGENCY END PRODUCT APPROVALS-SEE SYSTEM NAMEPLATE. CRANKCASE HEATER, WHEN APPLIED, MUST BE CONNECTED ONLY TO ITS RATED VOLTAGE. TO CORRECT IMPROPER ROTATION OF THREE PHASE MODELS, SWITCH ANY TWO SUPPLY LINES. REFER TO THE APPLICABLE SYSTEM WIRING DIAGRAM.

005-1270-00
XX
8-06

TOTAL SHEETS/	2	1	SHEET
DUPLICATE SHEETS			
			081



INTERPRET PER ASME Y14.5M-1994 AND EMERSON CLIMATE TECHNOLOGIES, INC. DESIGN STANDARDS 002022-00-001 SCALE: DRAWING PRODUCTION

CRITICAL PRODUCT CHARACTERISTICS UNLESS OTHERWISE SPECIFIED TOLERANCES ARE MILLIMETER OR INCHES: 1-PLACE & ANGULAR ± N/A

ECN000673	0	RELEASED	07-11-08	JYU	TX	WC
ENG NOTICE NO.	REV NO.	REVISIONS	DATE	BY	CHKD	APPD
<p>THIS DRAWING AND INFORMATION CONTAINED HEREIN ARE THE EXCLUSIVE PROPERTY OF EMERSON CLIMATE TECHNOLOGIES, INC. AND SHALL BE RETURNED UPON DEMAND AND SHALL NOT BE REPRODUCED IN WHOLE OR IN PART, EITHER ELECTRONICALLY OR MECHANICALLY, WITHOUT THE WRITTEN CONSENT OF EMERSON CLIMATE TECHNOLOGIES, INC.</p> <p>DATE: JYU SUPERSEDES DWG. NO. 7 REV. NO. /</p> <p>SCALE: 1:1 DATE FORMAT: MM-DD-YY</p> <p>TITLE: REF DWG-WELD COMP ASSM SHEET NUMBER: 497-0798-00 SHEET 1 OF 2</p>						

COPYRIGHT EMERSON CLIMATE TECHNOLOGIES, INC. - CONFIDENTIAL