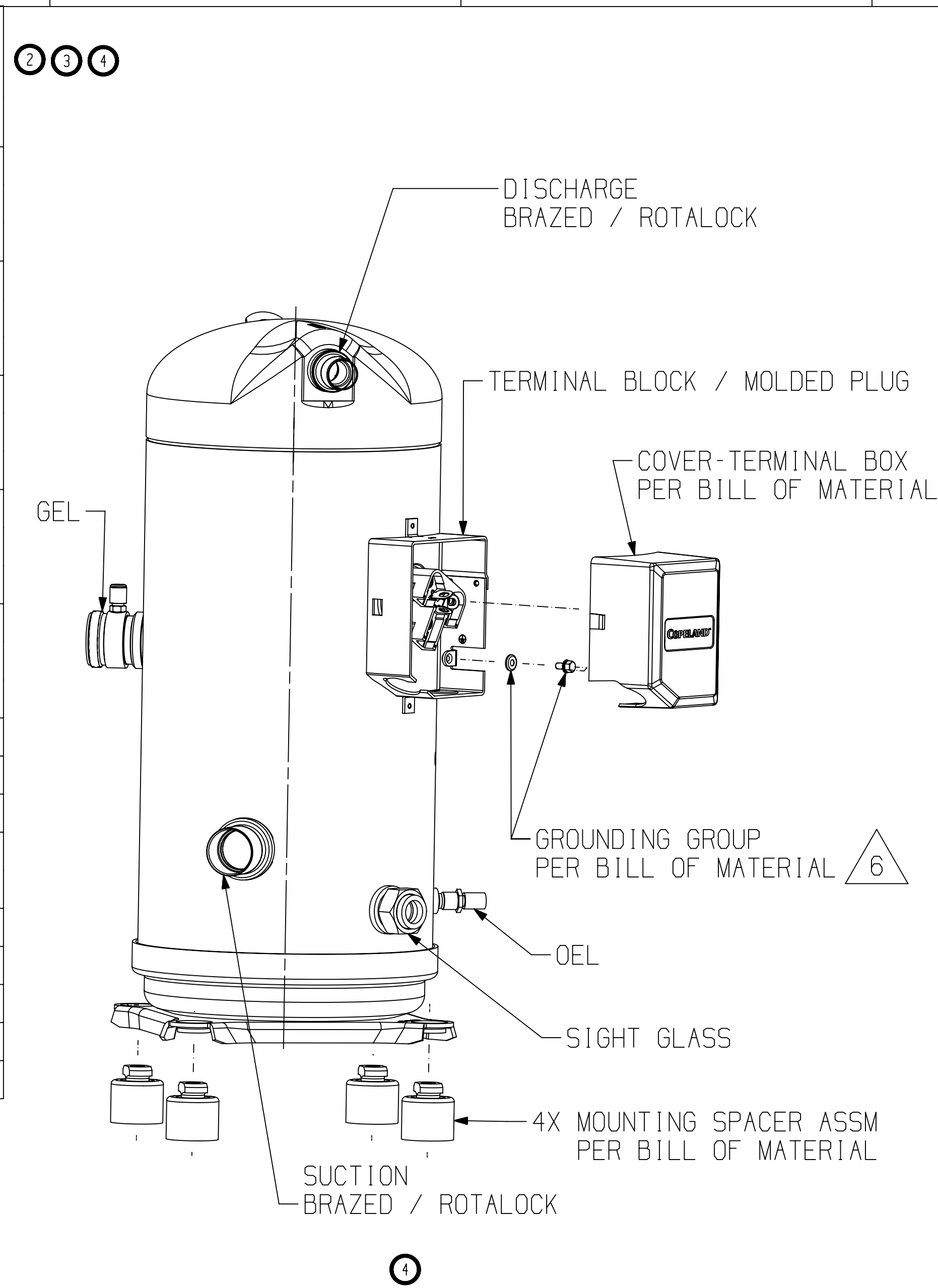


PART NUMBER	MODEL NUMBER	CUSTOMER CONNECTIONS (SUCTION & DISCHARGE)	SIGHT GLASS	OEL	GEL	ELECTRICAL CONNECTION	REMARK
497-3167-00	ZP154/182KCE	BRAZED	OMIT	OMIT	OMIT	TERMINAL BLOCK	-
	ZR160/190KC						
	ZR160/190KCE						
497-3167-01	ZP154/182KCE	BRAZED	USE	USE	OMIT		-
	ZR160/190KC						
	ZR160/190KCE						
497-3167-02	ZP154/182KCE	ROTALOCK	OMIT	OMIT	OMIT		-
	ZR160/190KC						
	ZR160/190KCE						
497-3167-03	ZP154/182KCE	ROTALOCK	USE	USE	OMIT		-
	ZR160/190KC						
	ZR160/190KCE						
497-3167-04	ZP154/182KCE	BRAZED	OMIT	USE	OMIT		WITHOUT OIL ADJUSTMENT
	ZR160/190KC						
	ZR160/190KCE						
497-3167-05	TBD	ROTALOCK	OMIT	USE	OMIT	-	
497-3167-07	ZP154/182KCE	BRAZED	USE	USE	USE	-	
497-3167-08	ZP154/182KCE	BRAZED	OMIT	OMIT	OMIT	-	
497-3167-09	ZP154/182KCE	BRAZED	USE	USE	OMIT	-	
	ZR160/190KCE						
497-3167-10	TBD	ROTALOCK	OMIT	OMIT	OMIT	-	
497-3167-11	TBD	ROTALOCK	USE	USE	OMIT	-	
497-3167-12	TBD	BRAZED	OMIT	USE	OMIT	-	
497-3167-13	TBD	ROTALOCK	OMIT	USE	OMIT	-	
497-3167-15	ZP154/182KCE	BRAZED	USE	USE	USE	-	



SPECIFICATIONS	
ES NO.	DESCRIPTION
ES92-155	CONVERSION-METRIC

- NOTES:
- 1 ALL TOLERANCES ± 1.5 (0.06) UNLESS OTHERWISE SPECIFIED. DUE TO ACCUMULATED ASSEMBLY TOLERANCES THE LISTED COMPONENTS MAY VARY FROM THE MOUNTING HOLES AS TABULATED.
 - 2 SUCTION FITTING ± 3.0 (0.12)
 - 3 DISCHARGE FITTING ± 3.0 (0.12)
 - 3. TUBE ENDS MUST BE PLUGGED.
 - 5 TORQUE 23-25 NM (200-220 IN-LBS)
 - 6 TORQUE SCREW 2.5-3.1 NEWTON-METERS (22.5-27.5 IN-LBS).

COMPRESSOR WIRING DIAGRAM
THREE PHASE MOTOR WITH INTERNAL PROTECTION

USE COPPER CONDUCTORS ONLY. USE THIS ON A GROUNDED SYSTEM ONLY. USE MINIMUM 75° C WIRE FOR AMPACITY DETERMINATION. INTERNAL MOTOR PROTECTION-ALLOW TIME FOR RESET. PRIMARY SINGLE PHASE FAILURE PROTECTION IS PROVIDED. CRANKCASE HEATER, WHEN APPLIED, MUST BE CONNECTED ONLY TO ITS RATED VOLTAGE. OVERCURRENT PROTECTION DEVICE RATING AND TYPE MUST BE IN ACCORDANCE WITH REGULATORY AGENCY END PRODUCT APPROVALS - SEE SYSTEM NAMEPLATE. TO CORRECT IMPROPER MOTOR ROTATION, SWITCH ANY TWO SUPPLY LINES.

MOTOR WINDING CONNECTION

PRINT DETAILS ARE SUBJECT TO CHANGE UNTIL PRODUCT IS FINAL RELEASED.

ECN	REV.	DESCRIPTION	DATE	BY	CHKD
ECN307267	4	UPDATE P/N TABLE & NOTES, ADDED VIEW	06-13-19	MAM	LLB
ECN307267	3	RELEASES -03 THRU -05, -08 THRU -13 & -15 INSTANCES	03-12-19	SSB	LLB
ECN307267	2	RELEASED -07, ADDED DELTA NOTE 5 & SEE SHEET 2	11-19-18	SSB	LLB
ECN307267	1	ADDED NOTE	10-29-18	SSB	LLB
ECN307267	0	RELEASED	10-04-18	SSB	LLB

EMERSON
Copeland

INTERPRET PER ASME Y14.5M-1994 AND EMERSON DESIGN STANDARDS DS2002

DO NOT SCALE DRAWING

CRITICAL PRODUCT CHARACTERISTICS

UNLESS OTHERWISE SPECIFIED DIMENSIONS ARE MILLIMETER OR (INCH)

TOLERANCES:
1-PLACE \pm .1
2-PLACE \pm .05
ANGULAR \pm .1

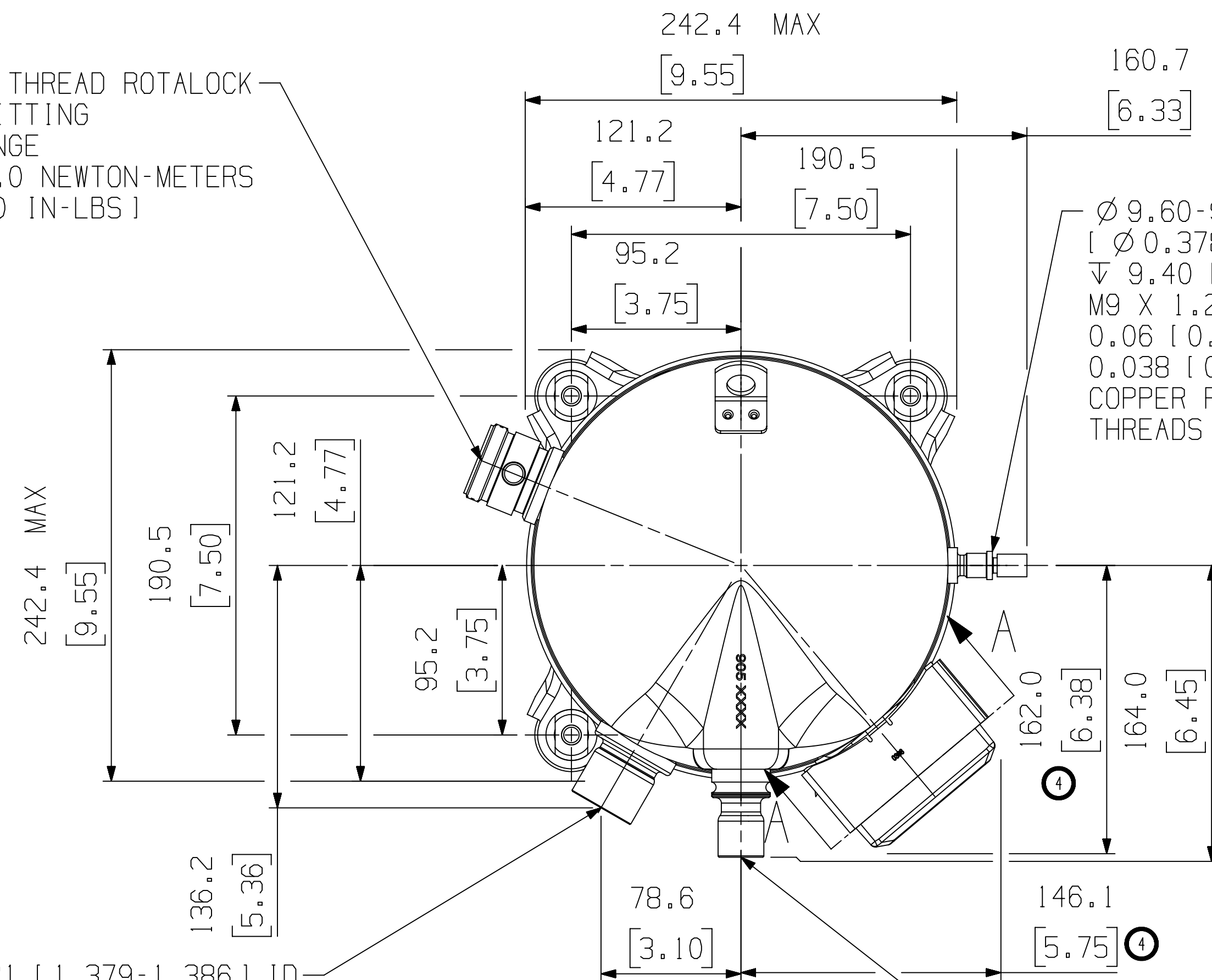
15 THIS DRAWING AND INFORMATION CONTAINED HEREIN ARE THE EXCLUSIVE PROPERTY OF EMERSON CLIMATE TECHNOLOGIES, INC AND/OR ITS AFFILIATES (COLLECTIVELY "EMERSON") AND SHALL BE RETURNED UPON DEMAND AND SHALL NOT BE REPRODUCED IN WHOLE OR IN PART, DISCLOSED TO ANYONE ELSE OR USED, WITHOUT THE WRITTEN CONSENT OF EMERSON.

CONFIDENTIALITY NOTICE

MATERIAL SPECIFICATION	DRAWN BY	SUPERSEDES DWG NO / REV NO
N/A	SSB	497-1675-00 / 009
	DATE	SCALE
	10-04-18	3:7
TITLE	DRAWING NUMBER	SHEET 1 OF 2 DWG
REF DWG-WELD COMP ASSM	497-3167-00	4

© COPYRIGHT EMERSON - CONFIDENTIAL

② [1.75-12] THREAD ROTALOCK
SUCTION FITTING
TORQUE RANGE
170.0-180.0 NEWTON-METERS
[1500-1590 IN-LBS]

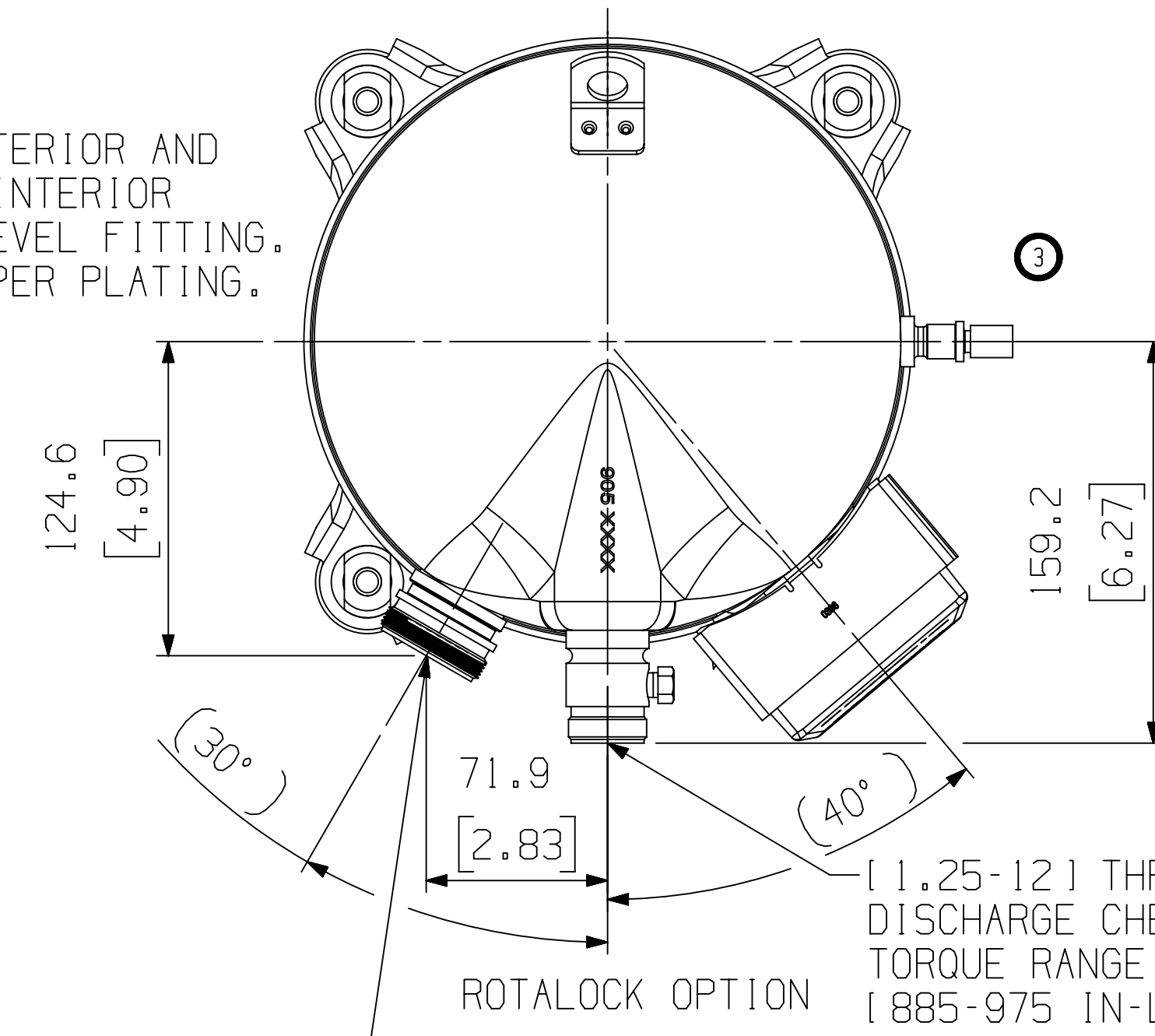


Ø 9.60-9.78 ID
[Ø 0.378-0.385]
▽ 9.40 [0.370] MIN
M9 X 1.25-6G THRU
0.06 [0.002] MIN THICK EXTERIOR AND
0.038 [0.0015] MIN THICK INTERIOR
COPPER PLATED STEEL OIL LEVEL FITTING.
THREADS TO BE FREE OF COPPER PLATING.

Ø 35.03-35.21 [1.379-1.386] ID
▽ 22.6 [0.89] MIN
0.038 [0.0015] MIN THICK
EXTERIOR AND INTERIOR COPPER
PLATED STEEL SUCTION FITTING

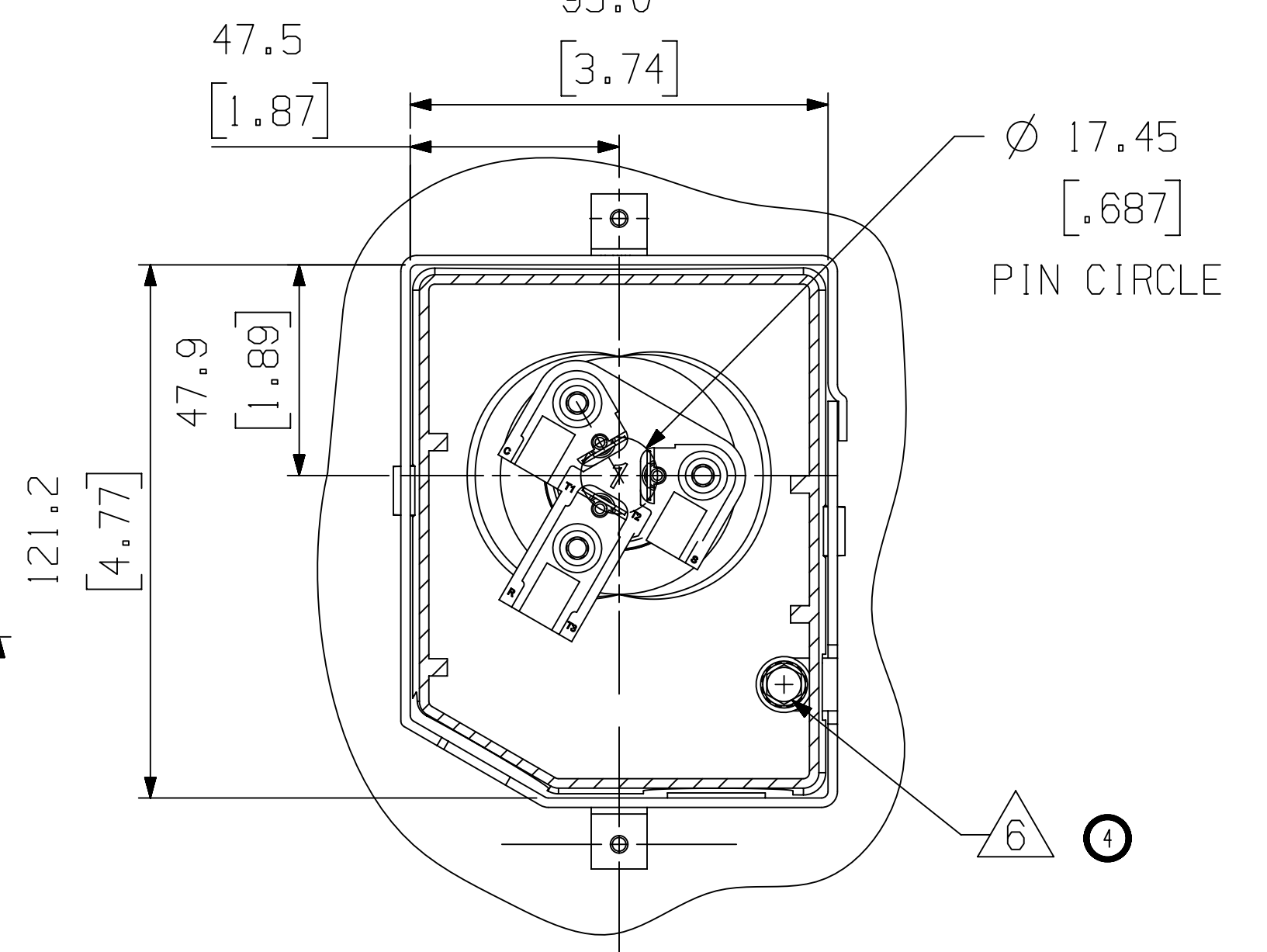
BRAZED OPTION

Ø 22.30-22.42 [0.878-0.883] ID
▽ 20.0 [0.79] MIN.
0.038 [0.0015] MIN. THICK EXTERIOR
AND INTERIOR COPPER PLATED
DISCHARGE FITTING/
STEEL CHECK VALVE

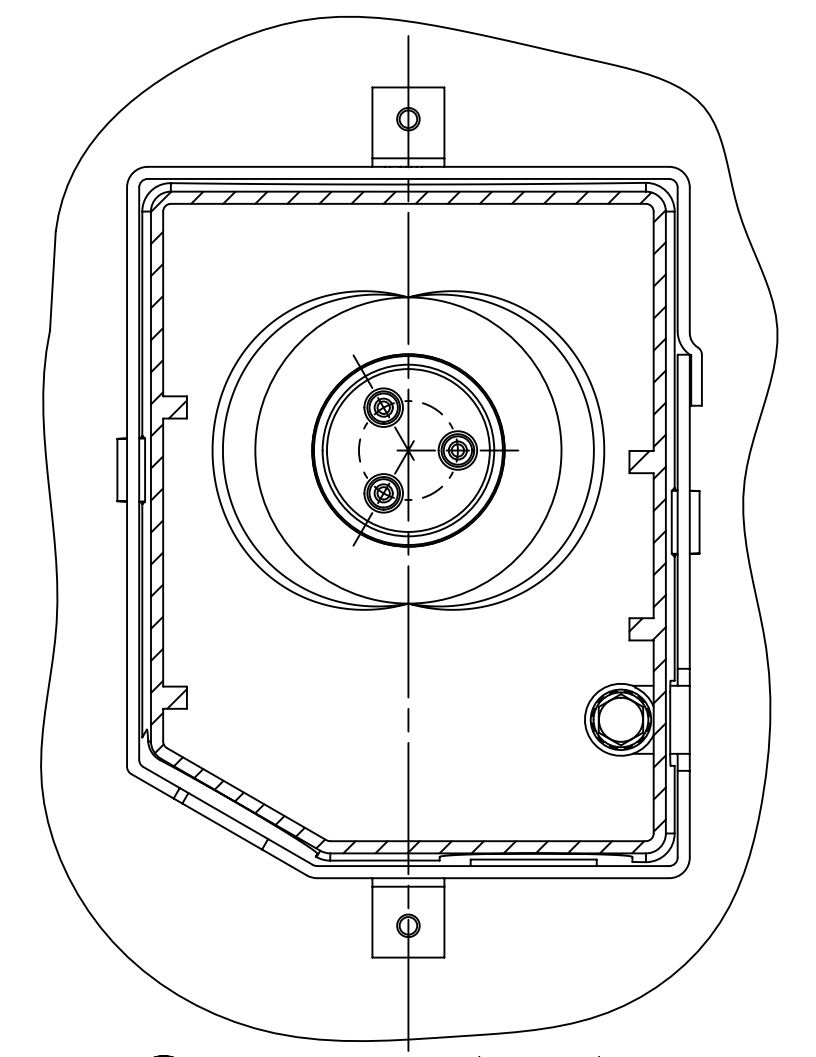


[1.25-12] THREAD ROTALOCK
DISCHARGE CHECK VALVE
TORQUE RANGE 100-110 NEWTON-METERS
[885-975 IN-LBS]

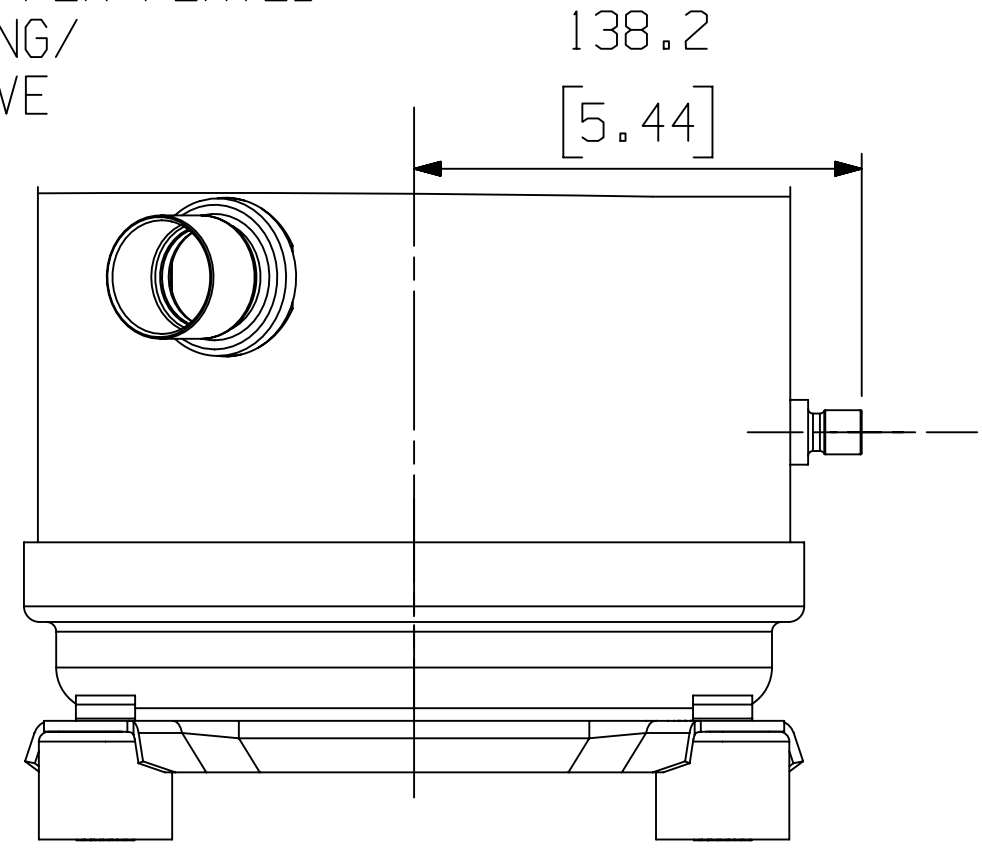
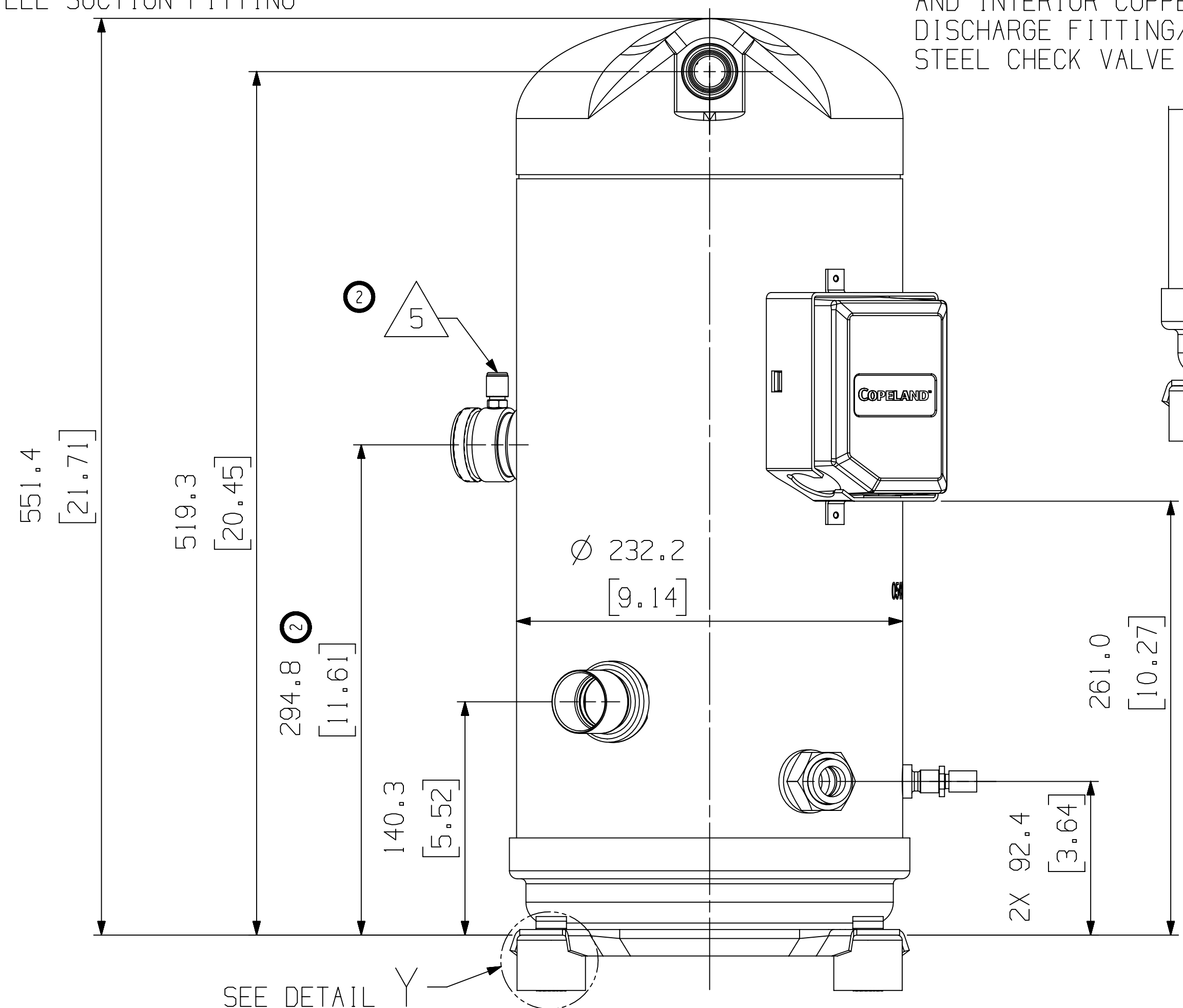
[1.75-12] THREAD ROTALOCK
SUCTION FITTING
TORQUE RANGE 170-180 NEWTON-METERS
[1500-1590 IN-LBS]



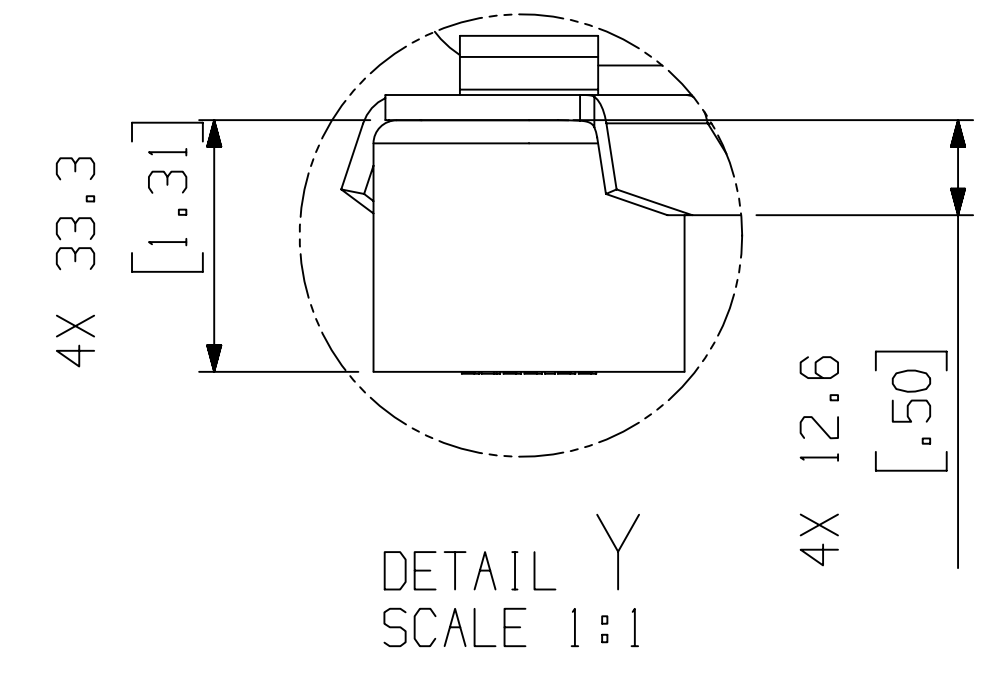
SECTION A - A
SCALE 3:4
ROTATED 40° CW
TERMINAL BLOCK OPTION



SECTION A - A
SCALE 3:4
ROTATED 40° CW
MOLDED PLUG OPTION



OPTIONAL VIEW
(WITHOUT OIL ADJUSTMENT)



DETAIL Y
SCALE 1:1



INTERPRET PER ASME
Y14.5M-1994 AND
EMERSON DESIGN
STANDARDS DS2002
DO NOT SCALE DRAWING
CRITICAL PRODUCT CHARACTERISTICS
UNLESS OTHERWISE SPECIFIED
DIMENSIONS ARE MILLIMETER OR (INCH)
TOLERANCES:
1-PLACE : .1
2-PLACE : .1
ANGULAR : .1

ECN307267	4	CHANGED DIMENSIONS & ADDED VIEW	06-13-19	MAM	LLB
ECN307267	3	RELEASES -03 THRU -05, -08 THRU -13 & -15 INSTANCES	03-12-19	SSB	LLB
ECN307267	2	GEL DETAILS ADDED	11-19-18	SSB	LLB
ECN307267	1	SEE SHEET 1	10-29-18	SSB	LLB
ECN307267	0	RELEASED	10-04-18	SSB	LLB
ENG NOTICE NO.	REV. NO.	REVISIONS	DATE	BY	CHKD

15 CONFIDENTIALITY NOTICE
THIS DRAWING AND INFORMATION CONTAINED HEREIN ARE THE EXCLUSIVE PROPERTY OF EMERSON CLIMATE TECHNOLOGIES, INC AND/OR ITS AFFILIATES (COLLECTIVELY "EMERSON") AND SHALL BE RETURNED UPON DEMAND AND SHALL NOT BE REPRODUCED IN WHOLE OR IN PART, DISCLOSED TO ANYONE ELSE OR USED, WITHOUT THE WRITTEN CONSENT OF EMERSON.

MATERIAL SPECIFICATION	DATE	SUPERSEDES DWG NO / REV NO	DATE	SCALE	DATE FORMAT
N/A	10-04-18	497-1675-00 / 009	10-04-18	3:7	MM-DD-YY
TITLE	DRAWING NUMBER	SHEET 2 OF 2 DWG		4	
REF DWG-WELD COMP ASSM	497-3167-00			SIZE	