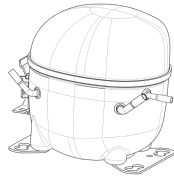


220-240V 50 1~**GENERAL DATA**

Application: LBP
Refrigerant: R290
Evaporating Temperature Range: -40°C to -10°C
Compressor Cooling: Fan
Fan air flow: 520 m³/h
Type: Hermetic reciprocating
Technology Type: On-Off
Expansion Device: Capillary Tube or Expansion Valve
Packing Quantity: Multi - 37 pcs
Displacement: 7.28 cm³
Horse power: 1.3 hp

Approvals:   

MECHANICAL DATA

Bore: 26.5 mm
Stroke: 13.2 mm
Oil Charge: 350ml +/-15ml
Free Internal Volume: 2.1 cm³
Maximum Recommended Refrigerant Charge: 150 g
Oil Type Configuration: Polyolester
Oil Type Viscosity: ISO22
Compressor pressurization: Without dry air charge
Weight: 10.7 kg

ELECTRICAL DATA

Motor Type: CSIR
Starting Torque: HST
Voltage working range at 50 Hz: 198-254 V
Maximum Motor Temperature: 130 °C
Start Winding Resistance: 28.9 Ω (± 10%) at 25°C
Run Winding Resistance: 6.8 Ω (± 10%) at 25°C

MOUNTING ACCESSORIES

	Description	Code
Anchorage:	no	-
Capacitor Bracket:	no	-
Washer:	no	-
Pin:	no	-
Clip:	no	-
Rotolock valve:	no	-
Cover:	yes	2075282
Grommets:	yes	2221011
Sleeves:	yes	2222018
Terminal Board:	yes	1027060
Overload Protector Bracket:	yes	2075299

ELECTRICAL COMPONENTS

	Component type	Description	Code
Start Capacitor:		53-64 MFD 330V	2252346
Starting Device:	Current relay	MTRPH-0027-65	2334123
Motor Protection:	External 3/4"	T0525/G6	2319076

EXTERNAL CHARACTERISTICS

Base Plate: European
Tray Holder: No
Height: 188 mm

	Internal Diameter (mm)	Material	Shape
Suction Connector	8.1	Copper	Slanted 42°
Discharge Connector	6.1	Copper	Straight
Process Connector	6.1	Copper	Slanted 42°

RATED POINT DATA

Cooling Capacity (W)	Power Consumption (W)	Current Consumption (A)	Gas Flow Rate (kg/h)	Efficiency (W/W)
±5%	±5%	±5%	±5%	±7%
319	241	1.70	3.24	1.32

Test condition: ASHRAE, Fan, Return Gas 32.2°C, Evaporating: -23.3°C, Condensing: 54°C, Ambient: 32.2°C, Liquid: 32.2°C

PERFORMANCE CURVE DATA

220V 50Hz

Condensing Temperature (°C)	Evaporating Temperature (°C)	Cooling Capacity (W)	Power Consumption (W)	Current Consumption (A)	Gas Flow Rate (kg/h)	Efficiency (W/W)
		±5%	±5%	±5%	±5%	±7%
35°C	-10	636	260	1.77	6.53	2.44
	-15	518	246	1.72	5.30	2.11
	-20	419	231	1.68	4.26	1.81
	-25	336	214	1.63	3.41	1.57
	-30	270	197	1.57	2.74	1.37
	-35	222	178	1.51	2.24	1.25
	-40	191	157	1.44	1.92	1.21

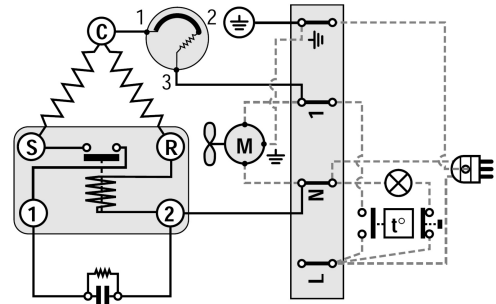
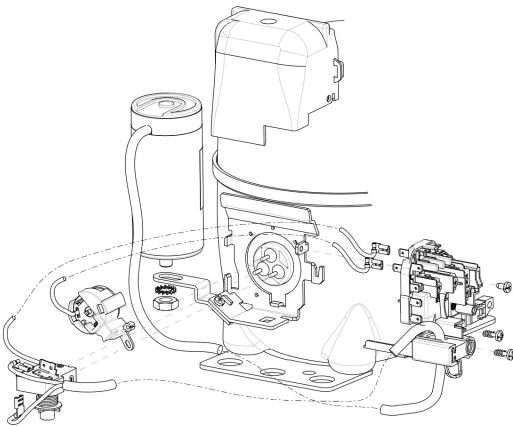
Condensing Temperature (°C)	Evaporating Temperature (°C)	Cooling Capacity (W)	Power Consumption (W)	Current Consumption (A)	Gas Flow Rate (kg/h)	Efficiency (W/W)
		±5%	±5%	±5%	±5%	±7%
45°C	-10	603	283	1.85	6.19	2.13
	-15	490	264	1.78	5.01	1.86
	-20	394	244	1.72	4.01	1.61
	-25	314	224	1.65	3.18	1.40
	-30	250	203	1.59	2.53	1.23
	-35	203	181	1.53	2.05	1.12

Condensing Temperature (°C)	Evaporating Temperature (°C)	Cooling Capacity (W)	Power Consumption (W)	Current Consumption (A)	Gas Flow Rate (kg/h)	Efficiency (W/W)
		±5%	±5%	±5%	±5%	±7%
55°C	-10	571	306	1.93	5.86	1.86
	-15	462	282	1.84	4.72	1.64
	-20	369	258	1.76	3.76	1.43
	-25	292	233	1.68	2.96	1.25
	-30	230	209	1.61	2.33	1.10

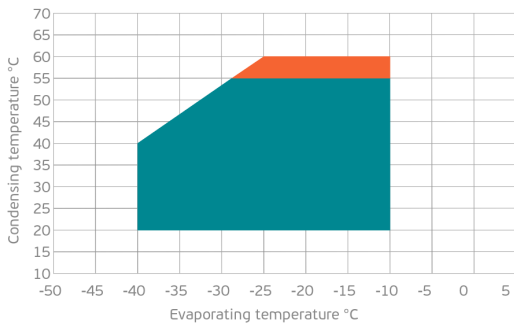
Test condition: ASHRAE, Fan, Return Gas 32.2°C, Ambient: 32.2°C, Liquid: 32.2°C

ASSEMBLY INSTRUCTION

WIRING DIAGRAM

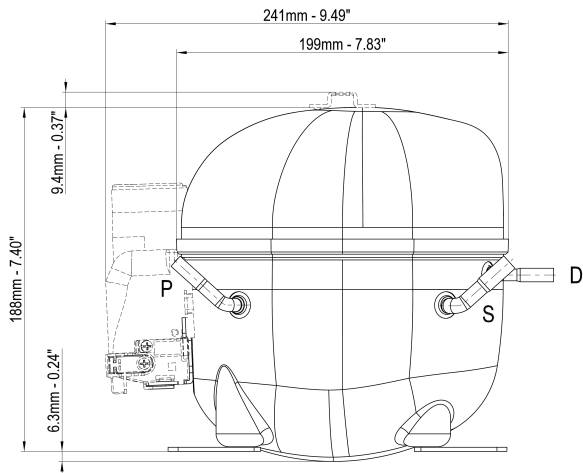


OPERATING ENVELOPE



- Operating Condition
- Transient Condition
- Superheating

NOTE: usage of compressors outside of intended working range cannot make use of the warranty, or should be consulted with Technical support.



	∅ mm	∅ in	Material
S - Suction	8.10 - 8.20	0.32	Cu
P - Process	6.10 - 6.20	0.24	Cu
D - Discharge	6.10 - 6.20	0.24	Cu

