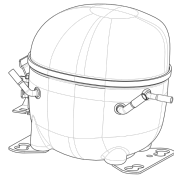


220-240V 50 1~**GENERAL DATA**

Application: HBP
Refrigerant: R600a
Evaporating Temperature Range: -15°C to 10°C
Compressor Cooling: Fan
Fan air flow: 520 m³/h
Type: Hermetic reciprocating
Technology Type: On-Off
Expansion Device: Capillary Tube or Expansion Valve
Packing Quantity: Multi - 80 pcs
Displacement: 14.28 cm³
Horse power: 1.4 hp

Approvals:   

MECHANICAL DATA

Bore: 30.16 mm
Stroke: 20 mm
Oil Charge: 350ml +/-15ml
Free Internal Volume: 2.1 cm³
Maximum Recommended Refrigerant Charge: 150 g
Oil Type Configuration: Polyolester
Oil Type Viscosity: ISO22
Compressor pressurization: Without dry air charge
Weight: 10.3 kg

ELECTRICAL DATA

Motor Type: CSIR
Starting Torque: HST
Voltage working range at 50 Hz: 198-254 V
Maximum Motor Temperature: 130 °C
Start Winding Resistance: 29.57 Ω (± 10%) at 25°C
Run Winding Resistance: 7.96 Ω (± 10%) at 25°C
Locked Rotor Amperage (LRA): 13 A

MOUNTING ACCESSORIES

| | Description | Code |
|------------------------------------|-------------|---------|
| Anchorage: | no | - |
| Capacitor Bracket: | no | - |
| Washer: | no | - |
| Pin: | no | - |
| Clip: | no | - |
| Rotolock valve: | no | - |
| Cover: | yes | 2075282 |
| Grommets: | yes | 2221011 |
| Sleeves: | yes | 2222018 |
| Terminal Board: | yes | 1027060 |
| Overload Protector Bracket: | yes | 2075299 |

ELECTRICAL COMPONENTS

| | Component type | Description | Code |
|--------------------------|----------------|----------------|---------|
| Start Capacitor: | | 43-53 MFD 330V | 2252347 |
| Motor Protection: | External 3/4" | T0186/G6 | 2319069 |
| Starting Device: | Current relay | MTRPH-0026-65 | 2334117 |

EXTERNAL CHARACTERISTICS

Base Plate: European
Tray Holder: No
Height: 188 mm

| | Internal Diameter (mm) | Material | Shape |
|----------------------------|------------------------|----------|-------------|
| Suction Connector | 8.1 | Copper | Slanted 42° |
| Discharge Connector | 6.1 | Copper | Straight |
| Process Connector | 6.1 | Copper | Slanted 42° |

RATED POINT DATA

| Cooling Capacity (W) | Power Consumption (W) | Current Consumption (A) | Gas Flow Rate (kg/h) | Efficiency (W/W) |
|----------------------|-----------------------|-------------------------|----------------------|------------------|
| ±5% | ±5% | ±5% | ±5% | ±7% |
| 817 | 324 | 2.05 | 9.79 | 2.52 |

Test condition: ASHRAE, Fan, Return Gas 35°C, Subcooling 8.3K, Evaporating: 7.2°C, Condensing: 54°C, Ambient: 35°C

PERFORMANCE CURVE DATA

220V 50Hz

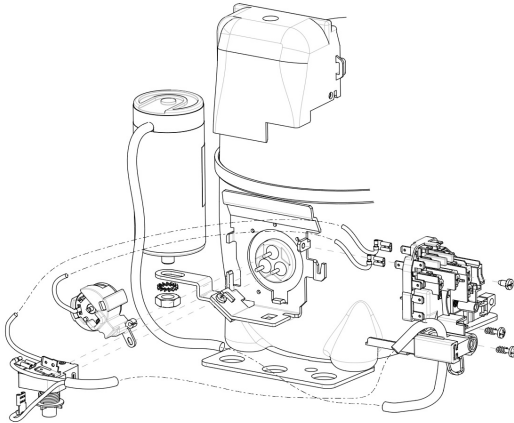
| Condensing Temperature (°C) | Evaporating Temperature (°C) | Cooling Capacity (W) | Power Consumption (W) | Current Consumption (A) | Gas Flow Rate (kg/h) | Efficiency (W/W) |
|-----------------------------|------------------------------|----------------------|-----------------------|-------------------------|----------------------|------------------|
| | | ±5% | ±5% | ±5% | ±5% | ±7% |
| 35°C | 10 | 1 099 | 271 | 1.87 | 11.37 | 4.06 |
| | 5 | 921 | 258 | 1.82 | 9.49 | 3.57 |
| | 0 | 763 | 244 | 1.77 | 7.84 | 3.13 |
| | -5 | 624 | 229 | 1.72 | 6.39 | 2.73 |
| | -10 | 504 | 213 | 1.67 | 5.16 | 2.37 |
| | -15 | 404 | 196 | 1.62 | 4.12 | 2.06 |

| Condensing Temperature (°C) | Evaporating Temperature (°C) | Cooling Capacity (W) | Power Consumption (W) | Current Consumption (A) | Gas Flow Rate (kg/h) | Efficiency (W/W) |
|-----------------------------|------------------------------|----------------------|-----------------------|-------------------------|----------------------|------------------|
| | | ±5% | ±5% | ±5% | ±5% | ±7% |
| 45°C | 10 | 995 | 307 | 1.99 | 11.09 | 3.24 |
| | 5 | 832 | 288 | 1.92 | 9.23 | 2.89 |
| | 0 | 686 | 268 | 1.85 | 7.59 | 2.56 |
| | -5 | 558 | 248 | 1.78 | 6.16 | 2.25 |
| | -10 | 448 | 227 | 1.71 | 4.93 | 1.97 |
| | -15 | 355 | 206 | 1.64 | 3.90 | 1.73 |

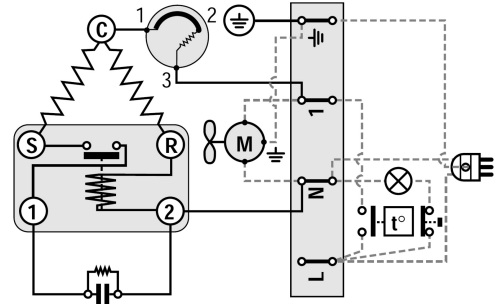
| Condensing Temperature (°C) | Evaporating Temperature (°C) | Cooling Capacity (W) | Power Consumption (W) | Current Consumption (A) | Gas Flow Rate (kg/h) | Efficiency (W/W) |
|-----------------------------|------------------------------|----------------------|-----------------------|-------------------------|----------------------|------------------|
| | | ±5% | ±5% | ±5% | ±5% | ±7% |
| 55°C | 10 | 893 | 340 | 2.12 | 10.81 | 2.63 |
| | 5 | 745 | 316 | 2.02 | 8.98 | 2.36 |
| | 0 | 613 | 292 | 1.93 | 7.36 | 2.10 |
| | -5 | 496 | 267 | 1.84 | 5.94 | 1.86 |
| | -10 | 395 | 241 | 1.75 | 4.72 | 1.64 |

Test condition: ASHRAE, Fan, Return Gas 35°C, Subcooling 8.3K, Ambient: 35°C

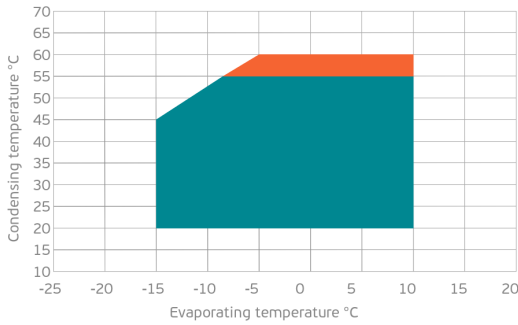
ASSEMBLY INSTRUCTION



WIRING DIAGRAM

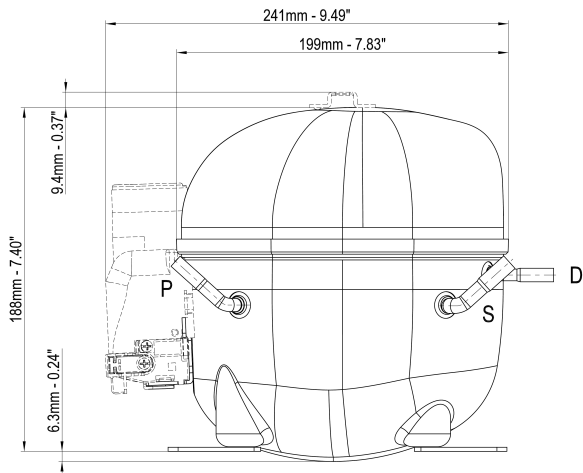


OPERATING ENVELOPE



- Operating Condition
- Transient Condition
- Superheating

NOTE: usage of compressors outside of intended working range cannot make use of the warranty, or should be consulted with Technical support.



| | ∅ mm | ∅ in | Material |
|----------------------|-------------|------|----------|
| S - Suction | 8.10 - 8.20 | 0.32 | Cu |
| P - Process | 6.10 - 6.20 | 0.24 | Cu |
| D - Discharge | 6.10 - 6.20 | 0.24 | Cu |

