

PART NUMBER	A ± 3.0	B	C	D ± 3.0	E	Ø F	MODEL NUMBER
497-2687-00	400.2 [15.76]	374.6 [14.75]	277.1 [10.91]	235.1 [9.25]	17.00 [0.669]	19.12-19.30 [0.752-0.759]	ZR34KH-PFJ, TFD ZR36KH-PFJ ZR40K3-PFV ZR40K3E-TFD
497-2687-01	386.4 [15.21]	360.9 [14.21]	264.4 [10.41]	222.3 [8.75]	17.00 [0.669]	19.12-19.30 [0.752-0.759]	ZR32K3-PFV, TF5 ZR34KL-PFV ZR22/28K3E-TFD
497-2687-02	417.3 [16.42]	391.6 [15.42]	293.5 [11.58]	252.0 [9.92]	20.40 [0.803]	22.30-22.48 [0.878-0.885]	ZR47K3-PFJ

SPECIFICATIONS	
ES NO.	DESCRIPTION
ES92-155	CONVERSION-METRIC

NOTES:

1 ALL TOLERANCES ± 1.5 [0.060] UNLESS OTHERWISE SPECIFIED.

2 MOUNTING KIT.

3. TUBE ENDS MUST BE PLUGGED.

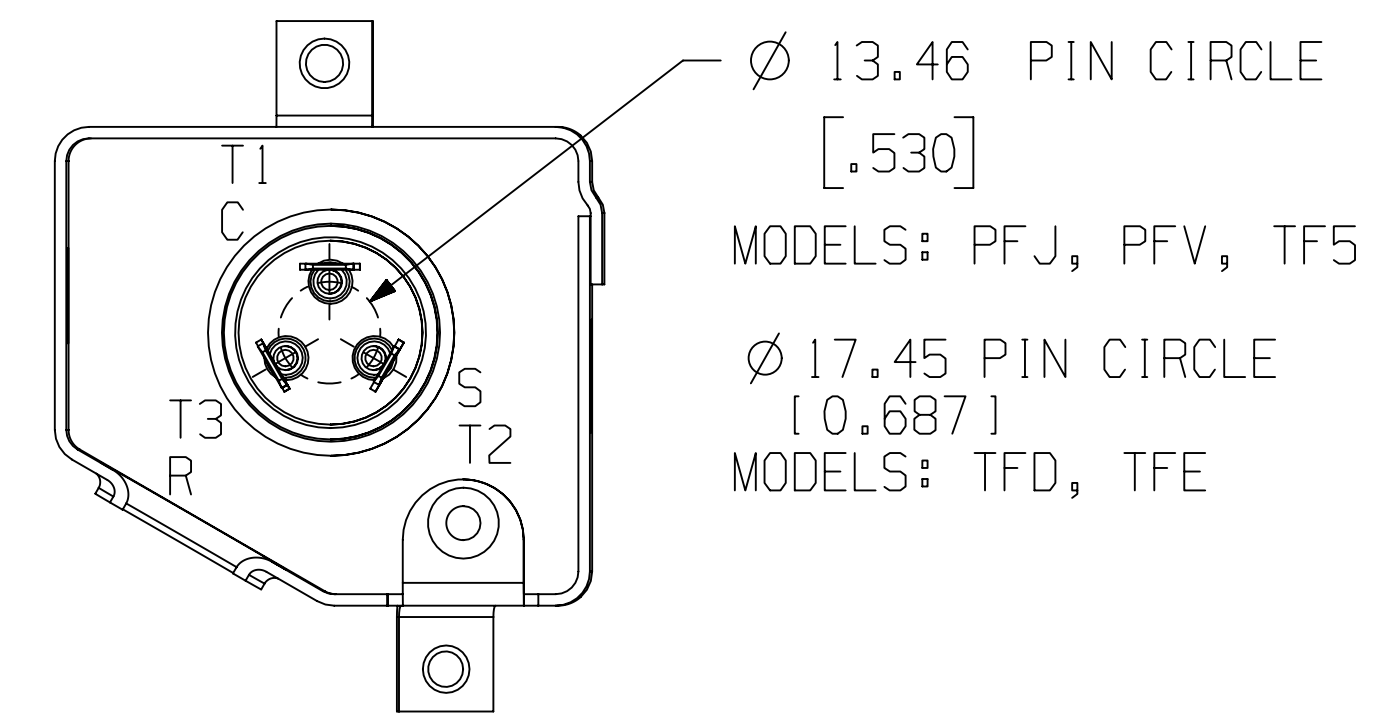
DUE TO ACCUMULATED ASSEMBLY TOLERANCES THE LISTED COMPONENTS MAY VARY FROM THE MOUNTING HOLES AS SHOWN BELOW:

◆ ALL FITTINGS : ± 3.0 [0.12]

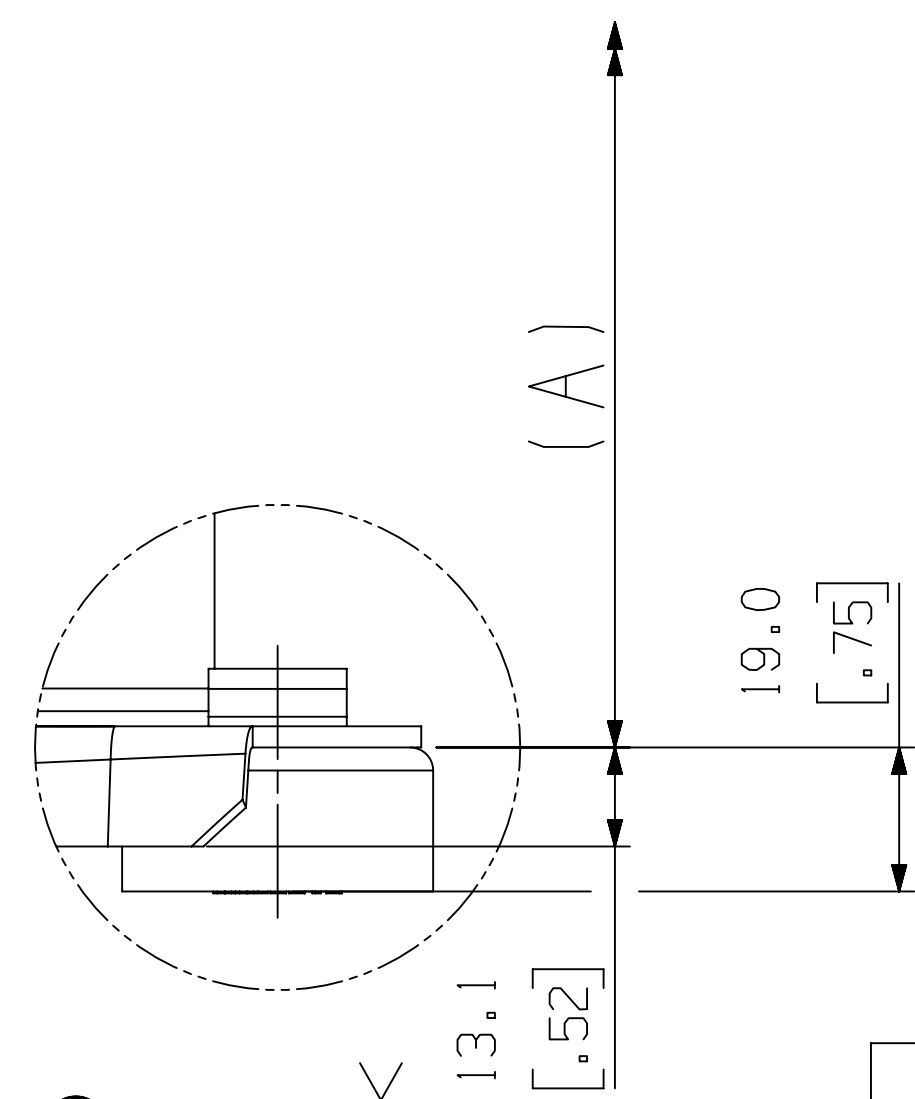
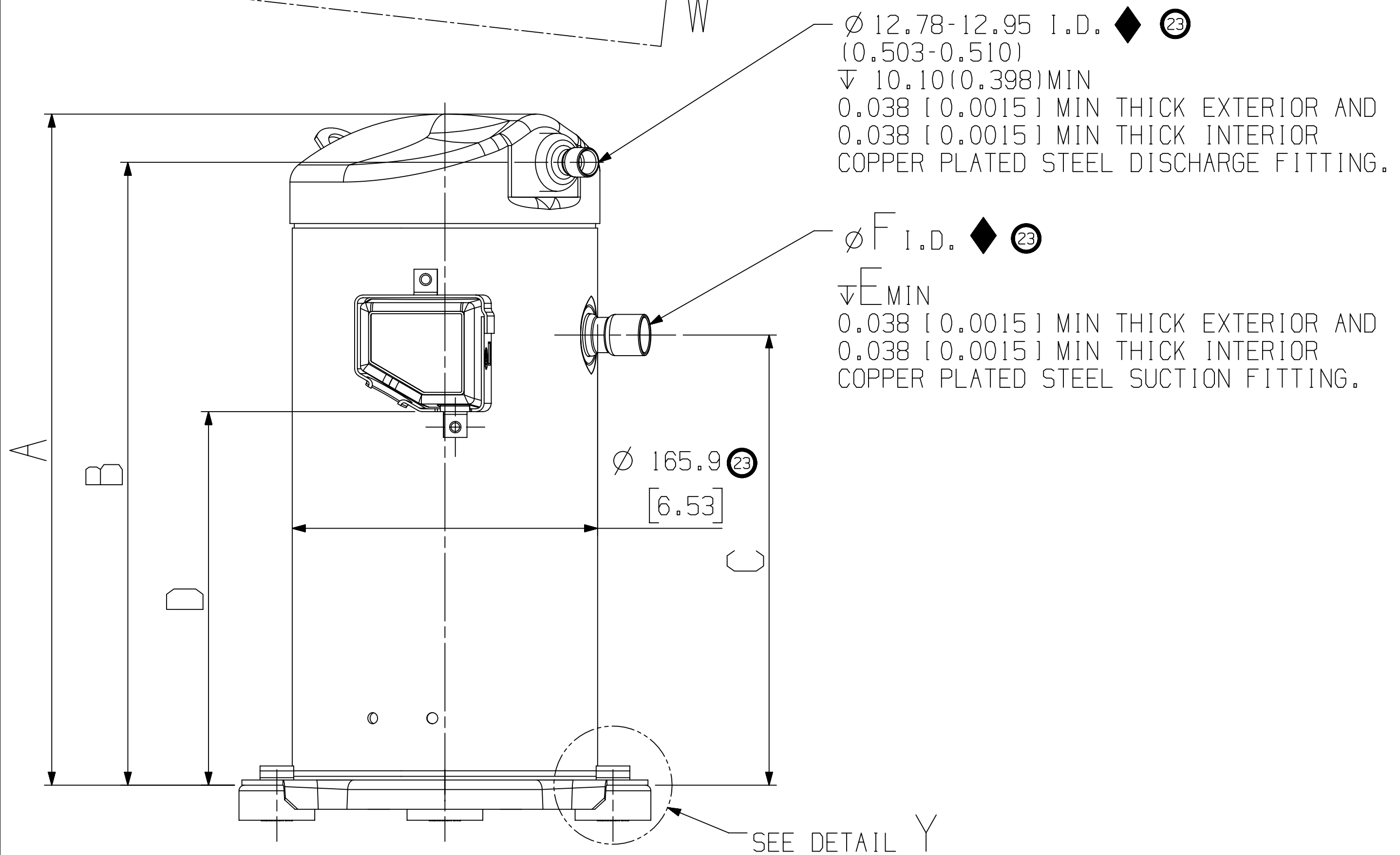
2 MOUNTING KIT.

3. TUBE ENDS MUST BE PLUGGED.

GROMMET DUROMETER	3 FOOT KIT
35-45	527-0116-02

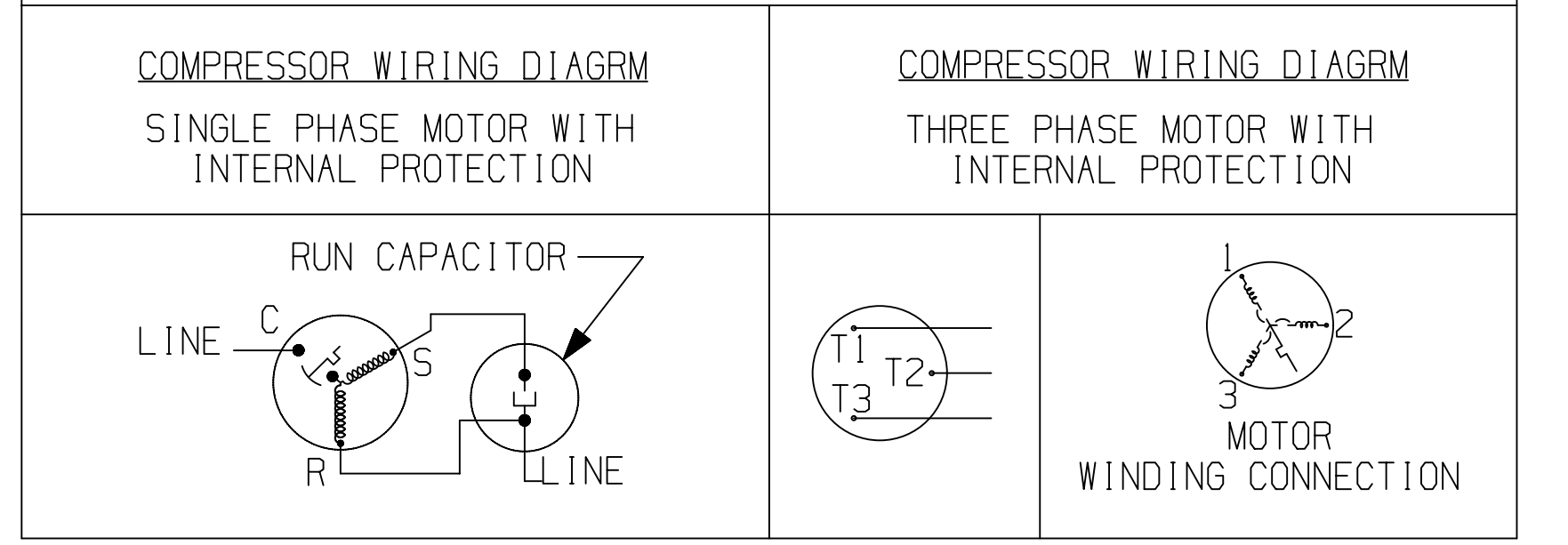


VIEW W - W  
T'BOX LAYOUT STANDARD  
SCALE 2:1



DETAIL Y  
SCALE 1:1

USE COPPER CONDUCTORS ONLY. USE MINIMUM 75° C WIRE FOR AMPACITY DETERMINATION. INTERNAL MOTOR PROTECTION - ALLOW TIME FOR RESET. OVERCURRENT PROTECTION DEVICE RATING AND TYPE MUST BE IN ACCORDANCE WITH REGULATORY AGENCY END PRODUCT APPROVALS - SEE SYSTEM NAMEPLATE. CRANKCASE HEATER, WHEN APPLIED, MUST BE CONNECTED ONLY TO ITS RATED VOLTAGE. TO CORRECT IMPROPER ROTATION OF THREE PHASE MODELS, SWITCH ANY TWO SUPPLY LINES. REFER TO THE APPLICABLE SYSTEM WIRING DIAGRAM.



ECN	REV.	DESCRIPTION	DATE	BY	CHKD	APPR
ECN308152	24	REMOVED ZR32K3-PFV/TF5, ZR34KL-PFV	07-17-18	SZ	ZH	AW
ECN302384	23	REDRAWN WITH CHANGES & RELEASED -01, -02	07-03-17	NST	PBM	JAS
32-0996-029	0	RELEASED	12-16-97	JLB	GD	RST

ENG NOTICE NO.	REV. NO.	REVISIONS	DATE	BY	CHKD	APPR
10		THIS DRAWING AND INFORMATION CONTAINED HEREIN ARE THE EXCLUSIVE PROPERTY OF EMERSON CLIMATE TECHNOLOGIES, INC. AND SHALL BE RETURNED UPON DEMAND AND SHALL NOT BE REPRODUCED, IN WHOLE OR IN PART, DISCLOSED TO ANYONE ELSE OR USED, WITHOUT THE WRITTEN CONSENT OF EMERSON CLIMATE TECHNOLOGIES, INC.				

MATERIAL SPECIFICATION	DRAWN BY	SUPERSEDES DWG. NO. / REV. NO.
N/A	NST	497-2687-00/022

TITLE	DRAWING NUMBER	SHEET 1 OF 1	DWG SIZE
REF DWG-WELD COMP ASSM	497-2687-00		4

**EMERSON**  
Climate Technologies

**Copeland**  
brand products

INTERPRET PER ASME Y14.5M-1994 AND EMERSON CLIMATE TECHNOLOGIES, INC. DESIGN STANDARDS DS2002

DO NOT SCALE DRAWING

THIRD ANGLE PROJECTION

CRITICAL PRODUCT CHARACTERISTICS

UNLESS OTHERWISE SPECIFIED DIMENSIONS ARE MILLIMETER OR (1 INCH)

1-PLACE ±  
2-PLACE ±  
ANGULAR ±